

The retread leader, again and again

With a wide tread base and durable, computer-designed casing, R260F is designed to be retreaded again and again.

In fact, for 14 straight years, professional retreaders ranked Bridgestone truck radials #1 for retreadability, more first-place positions than for all other tire manufacturers combined.*

Retreaded or not, it's nice to know your Bridgestone radials are built to take the punishment of the tough, high-scrub routes you travel every day.

Prove it to yourself

Make the only test that really matters: Try the R260F on your tractors, on your routes, with your drivers and your loads – in short, in **your** real world.

See for yourself how R260F can give you remarkably longer tire life that cuts your cost per mile. Call your dealer today!

*Tire Retreading/Repair Journal retreader surveys 1986-1999; tied with another manufacturer 1987 & 1991.

Your Dealer

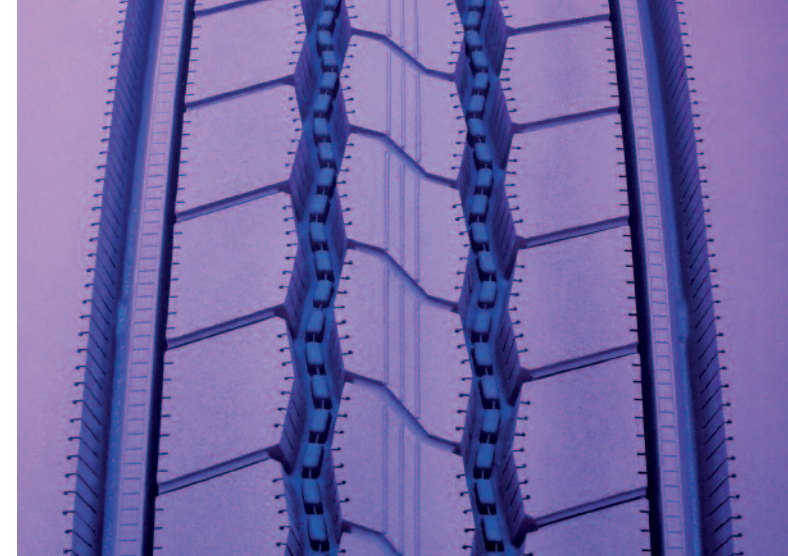


BRIDGESTONE

PASSION for EXCELLENCE

535 Marriott Drive • Nashville, Tennessee 37214
(800) 523.6366 ext.6 www.BridgestoneTrucktires.com

B50993 R9-04 (50M)



BRIDGESTONE

R260F

Steer Radials

Tough tread
Tough sidewalls
Tough casing

Triple-tough for your toughest driving!

NEW R260F triple-tough

PASSION
for EXCELLENCE

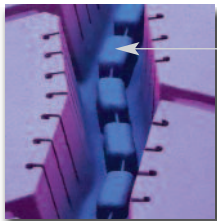
Introducing Bridgestone R260F

Bridgestone was one of the first to design a radial tire that's a real answer for brutal, urban P&D work. R260F steer radials are the latest innovation in that line, built to deliver longer tread life and lower cost per mile in your toughest, meanest, high-scrub environments.

R260F deep-tread performance

Stress-relief rib sipes

Minimize rib edge stresses to combat irregular wear on main ribs.



Groove-bottom platforms

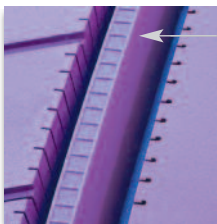
Enhance retreadability by helping to prevent stones from lodging in grooves and drilling into belts, reducing casing life.

Proven tread pattern

Classic, five-rib design promotes extended even wear and offers excellent wet traction.

Thirsty cross-rib sipes

Improve wet traction by slicing through water for a solid grip on wet roads.



Equalizer Rib™ design

Promotes uniform rib wear and higher removal mileage. This small rib absorbs irregular wear forces and fights initiation and spread of edge wear, including river and wavy wear, on the main ribs.

Solid square shoulder

Combats turning and maneuvering side forces to fight initiation and spread of shoulder wear.

Tough tread • Tough sidewalls • Tough casing • R260F/Triple-tough

Tougher to last longer

Scrub-resistant tread compound stands up to brutal, urban P&D work for longer tread life that cuts your cost per mile.

Wider to last longer

R260F distributes scuffing side forces over a wider tread surface to promote even wear. Plus, its wider design means R260F takes a full-size drive cap, preferred by most fleet operators, for even more low-cost miles.

Deeper to last longer

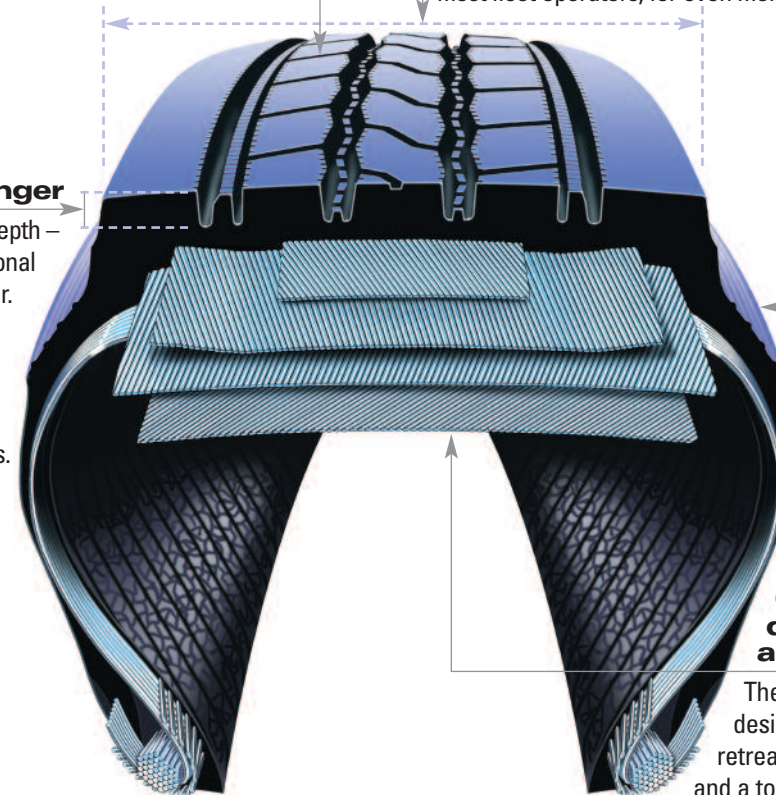
R260F has a 22/32" tread depth – 20% deeper than conventional rib radials – for longer wear. More tread volume means lower cost per mile, especially for fleets that experience ultra-fast wear in high-scrub environments.

Tough sidewall protection

Extra-thick ribs protect the casing by fighting damage from curbing, cuts and abrasions. If one side wears away, flip the tire over for continued protection.

Computer-designed all-steel casing

The R260F's casing is designed for long life and retreadability. Four steel belts and a tough steel body ply fight tread squirm to reduce irregular wear, while the top belt provides added protection against penetrating road hazards to fight flats.



R260F

Tire size	Load range	Article number	Weight (lb)	Measured rim	Overall diameter	Overall width	Static loaded radius	Overall width (loaded)	RPM	Tread depth (32nds)	Tire Load Limit at Cold Inflation Pressure				Maximum sustained speed
											Single		Dual		
											kg@kpa	lb@psi	kg@kpa	lb@psi	
11R22.5	G	158-846	123.7	8.25	41.5	10.8	19.5	11.9	501	22	2800@720	6175@105	2650@720	5840@105	75
11R22.5	H	158-863	124.2	8.25	41.5	10.8	19.5	11.9	501	22	3000@830	6610@120	2725@830	6005@120	75
11R24.5	G	158-880	132.1	8.25	43.6	10.8	20.5	11.9	476	22	3000@720	6610@105	2725@720	6005@105	75
11R24.5	H	158-897	132.5	8.25	43.6	10.8	20.5	11.9	476	22	3250@830	7160@120	3000@830	6610@120	75
295/75R22.5	G	158-829	120.5	8.25	40.6	10.9	19.1	12.1	512	22	2800@760	6175@110	2575@760	5675@110	75
285/75R24.5	G	158-812	125.6	8.25	41.8	10.8	19.7	11.9	497	22	2800@760	6175@110	2575@760	5675@110	75

Additional technical information is available at www.trucktires.com, from your dealer or truckstop.