

DESIGNED TO ADAPT TO YOUR MINESITE

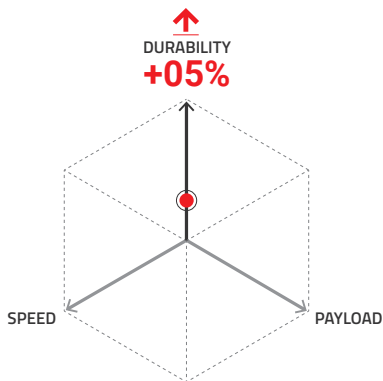
MasterCore, Bridgestone's latest mining tire, is designed with smart tech inside for hard work outside. New, innovative core technology and proprietary design improvements allow these tires to work overtime for enhanced performance.

With increased flexibility, these tires can be customized to meet the needs of any site so you can run your mines more efficiently, with greater productivity.

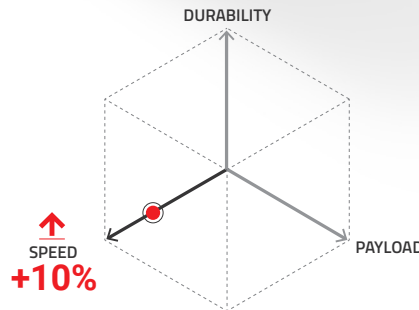


MASTERCORE VRPS

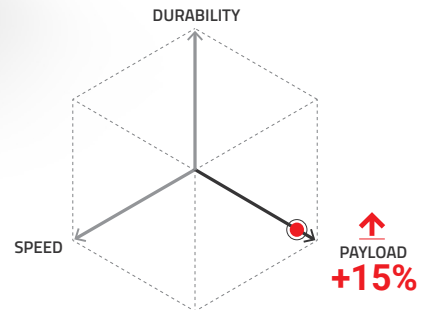
V - STEEL ROCK
PREMIUM SERVICE



OR



OR



Discover up to **5% more durability**, **10% faster speeds**, or **15% greater payloads**.

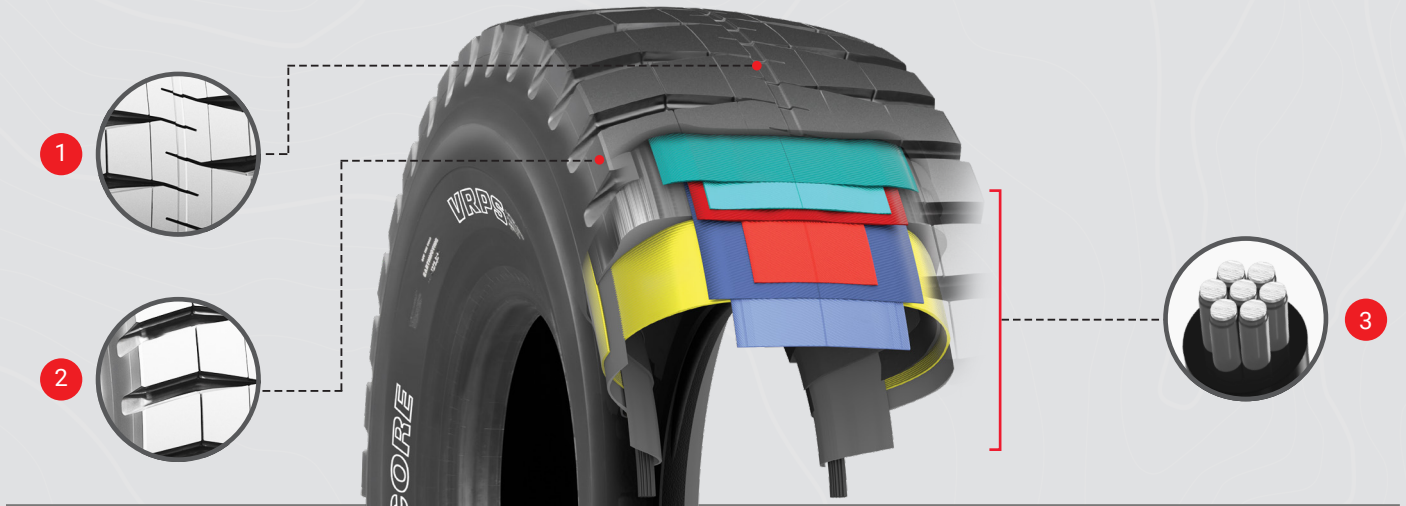
MasterCore's flexibility is made possible by new compounds and a revolutionary steel cord with new anti-rust and adhesion coatings.

Comparison based on conventional Bridgestone VRPS vs Bridgestone MasterCore VRPS and conventional Bridgestone VRF vs Bridgestone MasterCore VRF when same size apply from field data and internal testing. Tire wear may increase when maximum speed or payload capacity is increased. Results may vary.



SPECIAL FEATURES

MASTERCORE VRPS



1. NARROW GROOVES

High resistance to wear and cutting for extra heavy duty mining performance.

2. WIDE SHOULDER GROOVES

Provides traction in multiple mining conditions.

3. PROPRIETARY CASING

Comprised of new compounds and a revolutionary steel cord with new anti-rust and adhesion coatings.



SIZE	PLY/STAR RATING	COMPOUND / CONSTRUCTION	TRA / APPLICATION	ARTICLE #	TMPH/TKPH	AVERAGE WEIGHT [LB/KG]	OTD [32 ND /MM]	OVERALL DIAMETER [IN/MM]	OVERALL WIDTH [IN/MM]	LOAD CAPACITY AT 102 PSI [LB/KG]
59/80R63	2*	E1A	E-4	11614	1,038 1,515	12,621 5,725	146 116	158.1 4,017	57.8 1,467	253,500 115,000
59/80R63	2*	E2A	E-4	11615	841 1,228	12,687 5,755	146 116	158.1 4,017	57.8 1,467	253,500 115,000
59/80R63	2*	E3A	E-4	11617	1,215 1,773	12,595 5,713	146 116	158.1 4,017	57.8 1,467	253,500 115,000

CONVENTIONAL VS MASTERCORE LOAD CAPACITY [KG] | BASED ON COLD INFLATION

	SIZE	RECOMMENDED RIM / FLANGE	TIRE	80 PSI	83 PSI	87 PSI	91 PSI	94 PSI	98 PSI	102 PSI
	59/80R63	44.00/5.0	Conventional	85,000	87,500	90,000	92,500	95,000	97,500	100,000
			MasterCore	97,500	100,000	103,000	106,000	109,000	112,000	115,000
	59/80R63	41.00/5.0	Conventional	82,000	84,000	86,000	89,000	91,000	94,000	96,000
			MasterCore	94,000	96,000	99,000	102,000	105,000	108,000	110,000

Please make sure you are running the appropriate Tire Load Limit, as these vary based on your operation. Contact your Bridgestone representative for additional support.



INTELLIGENT PRODUCTS

Bridgestone OTR tires are designed with intelligent technologies to help customers in their quest for reliable performance and improved productivity.

INTEGRATED TECHNOLOGIES

We provide customers with data-driven technology to manage their assets through actionable insights that integrate seamlessly with their tire management program.

BEST-IN-CLASS SERVICE

Our extensive dealer network offers highly qualified engineers and comprehensive training programs that help improve tire performance and minimize downtime.